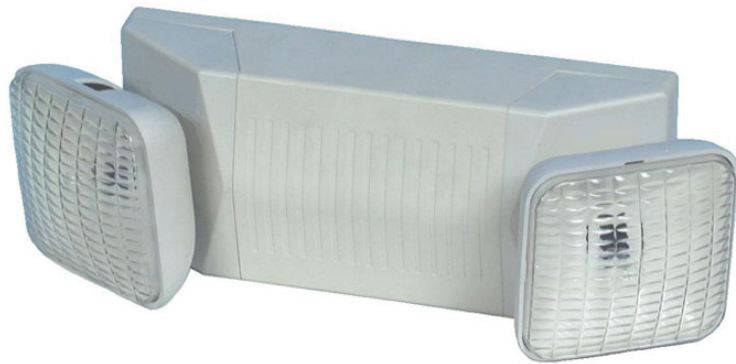


# SINAN

# SE-90

Emergency Light  
Thermoplastic Housing  
Square Heads



## **DESCRIPTION**

The SE-90 is an attractive, emergency lighting unit with soft rounded corners and adjustable square heads.

## **APPLICATION**

Suitable for use in almost any commercial or light industrial application.

## **OPTIONS**

UL damp location listing. Add "D" to end of catalog number.

Halogen lamps, 5W, 6V JC bipin.  
Add "H" to end of catalog number.

## **APPROVALS**

UL924.

UL listed for damp locations.  
Life Safety NFPA 101.

## **HOUSING**

The housing is made of injection molded thermoplastic. It has high impact resistance and is UL94-5V rated.

## **MOUNTING**

The back mounting plate is made of injection molded thermoplastic. It has a molded in universal J-Box mounting pattern and keyhole slots. The main housing snaps on to the back plate for quick and easy installation.

## **HEADS**

Two attractive square shaped heads with rounded corners are adjustable allowing the end user to direct the light where it will be most useful.

## **ELECTRICAL/BATTERY**

- Dual voltage input 120/277 VAC, 60 Hz.
- Maintenance free, Sealed Lead Calcium 6V, 4.2 AH battery with a maximum full recharge time of 48 hours. Minimum 1 ½ hour emergency operation.
- Low voltage disconnect of the battery prevents deep discharge and maintains good battery life.
- Fully automatic, solid state charger.
- Test switch with LED charge indicator/AC voltage indicator.
- Line Latching feature prevents the unit from turning on during installation to a non-energized AC circuit. Saves labor since the installer does not have to return to connect the battery terminals once the building is energized.

Catalog Number	Heads	Lamp Type	Lamp V DC	Lamp Watts	Weight (Lbs)	Volume (cu. ft.)	Pieces Per Skid	Pieces Per 20'	Pieces Per 40'
SE-90	Square Heads	T-5 Incan.	6	2 x 5.4	4.4	0.31	240	2400	4800